

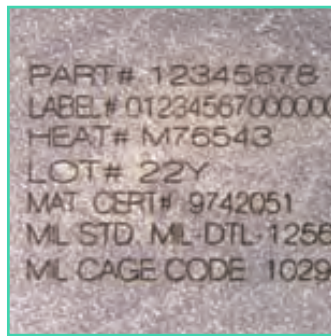
eSolarMark Fiber Fiber Laser Coding System

The Matthews eSolarMark Fiber laser coding system is designed to provide contrasting marks onto a variety of metals and plastics, including HDPE, OPP film, ABS, stainless steel, and titanium. Suitable for a variety of industries, the fiber laser is ideal for food and beverage, pharmaceutical, automotive, and building applications.

Matthews laser coding systems provide many interface options to connect to remote devices such as PLC's, packaging equipment, and material handling equipment. Our lasers have the greatest focal distance, allowing the laser to be mounted farther away from production lines. There are two control interface models (network or 10.4" color touch screen) and Matthews provides free message design software with every laser system purchased.

Features:

- High speed, vector quality coding of metalized materials
- Optional continuous or pulse mode performance
- Elimination of solvent and ink consumables



eSolarMark Fiber

ESOLARMARK FIBER		1.06 μM WAVELENGTH	
	Continuous Mode	Pulse Mode	
Laser Output Power	10W, 20W	10W, 20W, 30W, 50W	
Electrical Requirements	115V 60Hz/230V 50Hz, Single Phase15	115V 60Hz/230V 50Hz, Single Phase15	
Power Consumption	10W = 400W/ 20W = 1600W	400W	
Cooling	Integrated fans: at ambient temperature 41° - 104° F (5°-40°C) Up to 100% of laser duty cycle	Integrated fans: at ambient temperature 41° - 104° F (5°-40°C) Up to 100% of laser duty cycle	
Operating Environment	Ambient temperature 41° - 104° F (5 - 40° C) Humidity up to 80% non-condensing	Ambient temperature 41° - 104° F (5 - 40° C) Humidity up to 80% non-condensing	
Enclosure Type	IP52, NEMA 12	IP52, NEMA 12	
Dimensions and Weight	Control Unit: 15" L x 16.5" W x 7.3" H (380mm L x 420mm W x 185mm H) 33 lb. (15 kg) Marking Unit: 12.3" L x 4.3" W x 4.8" H (312mm L x 108mm W x 122mm H) 6.6 lb. (3 kg)	Control Unit: 15" L x 16.5" W x 7.3" H (380mm L x 420mm W x 185mm H) 33 lb. (15 kg) Marking Unit: 19.5" L x 4.3" W x 4.8" H (495mm L x 108mm W x 122mm H) 11 lb. (5 kg)	

COMMUNICATION

- USB/RS232/Ethernet 10 Base T
- Input/output connector for: system interlocks, remote start/stop, ready, marking, status signals, and remote key switch connection.
- SolMark II job edition software available for Windows XP, Windows 7

LANGUAGES

- Different language versions available: English, Chinese, French, German, Spanish, Italian, Dutch, Polish, Swedish, and Portuguese

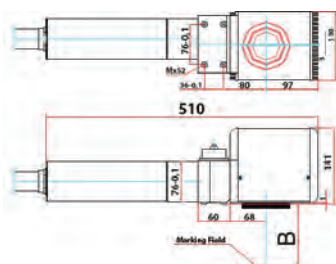
MARKING SPECIFICATIONS

Lens type	F-Theta			
Marking Field (in mm)	LF3	LF4	LF6	LF12
	70 x 70	100 x 100	150 x 150	300 x 300

OPTIONS

- Red laser pointer for marking position preview
- Product detector and shaft encoder
- Fumes/dust extractor (with active carbon and HEPA filter)
- Multiple user interface options (network, touch screen)
- Custom and standard enclosures

DIMENSIONS (All dimensions specified in mm's unless otherwise noted)



CE AND CDRH COMPLIANT

DANGER

Invisible Laser Radiation

Avoid Eye or Skin Exposure to Direct or Scattered Radiation



CO₂ Laser

10,600nm, 150W Max Class IV Laser Product




Matthews Marking Systems™

Americas | Pittsburgh, PA | O: 800-775-7775 | www.matthewsmarking.com
 Asia | Beijing, China | O: +86.10.8879.6525 | www.matthewsmarking.cn
 Europe/Australasia | Mölndal, Sweden | O: +46.31.338.7900 | www.matthewsmarking.se
 Germany | Aschau, Germany | O: +49.80.5295110 | www.matthewsmarking.de

