

L5000PA Label Applicator

Hoppmann



Labeling Equipment

Advanced solutions for the world's automatic labeling pressure sensitive needs.

Finally, a flexible "first out" print and apply labeling system you can depend on. The Hoppmann L5000PA Print & Apply labeler combines rugged construction with industrial-grade thermal transfer or direct thermal printing for 24-hour, trouble-free operation. The base unit can be easily field upgraded by adding a variety of application modules and accessories.

All the necessary electronics and auxiliary air required to run the modules and accessories are standard on the L5000PA.

Hoppmann's L5000PA is designed to easily adapt to your labeling applications needs.

Product Handling System

- ▶ Rugged construction:
 - Front panel is 1/2" (13mm) solid aluminum to provide strong mounting structure
 - Solid steel 1" x 2" (25mm x 51mm) U-arm structure eliminates vibration
- ▶ Powered unwind and rewind spools reduce stress on the print engine
- ▶ Standard 14" (356mm) supply roll for longer production runs
 - Optional 18" (457mm) supply roll upgrade
- ▶ Print speeds up to 12" (305mm) per second
- ▶ Tamp-on, blow-on, wipe-on and corner wrap application options
- ▶ Placement accuracy of +/- 0.032" (0.81mm)
- ▶ Standard auxiliary air valve for add-on modules or product handling pneumatics
- ▶ Prints standard bar code symbologies and human readable fonts



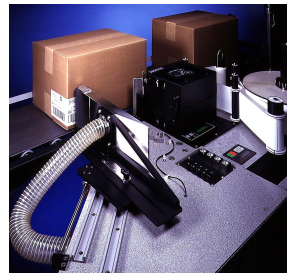
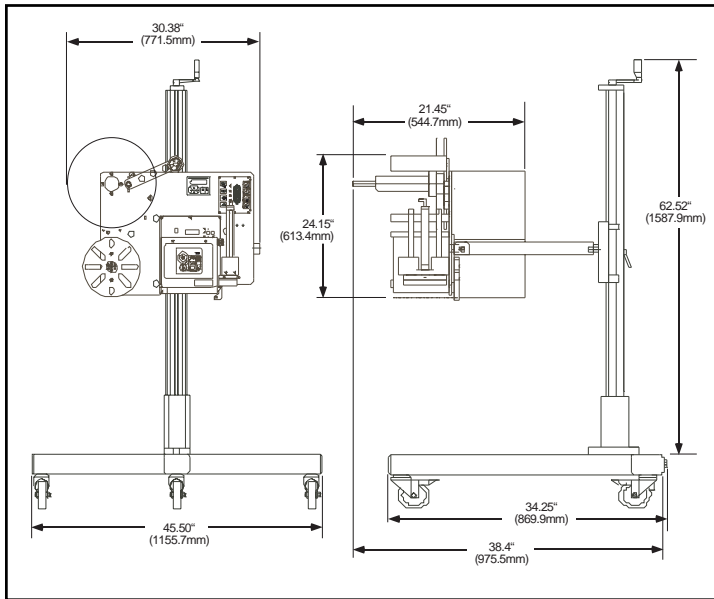
Hoppmann Labeling Equipment... The *solution* starts *here.*

STANDARD APPLICATOR SPECIFICATIONS

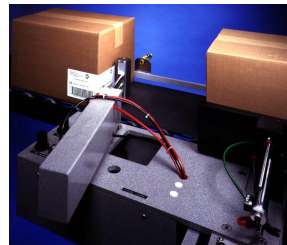
Labeling Rate (ppm)	150ppm* to 300ppm <i>*Dependent upon label & application</i>
Label Head Speed	12"/sec (305 mm/sec)
Accuracy	+/- .032" (0.81mm)
Controls	PLC based, operator interface w/ LCD display & membrane keypad
Label Drive Motor	High Torque Micro Stepper
Unwind Roll Diameter	14" (356mm) OD x 3" (76mm) ID
Unwind Linear Adjustment	1 5/8" (41.3mm) Linear Travel
Product Detection	Photo Eye
Machine Interface	External Sub D. Connectors
Power Requirements	115 VAC, 60 Hz, 6 Amps
Air Requirements	80 psi @2.2 CFM
Environment	41-104°F, 5-40°C (25-85% Relative Humidity)

Available Upgrades and Options

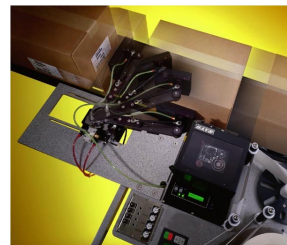
- Tamp-on, blow-on and wipe-on modules
- Tamp/blow module
- Soft-tamp module detects product location
- Extended length tamp modules (up to 24"/609.6mm)
- Corner wrap accessories
- Label low level sensor and beacon fault upgrades
- Adjustable "T" stands and machine mount supports
- H-Frame with conveyor mount
- Horizontal positioning device
- 18" (457.2mm) supply roll
- Remote operator panel
- Extra memory cards
- Transport conveyors and systems
- Systems integration and special automation
- Centrifugal Feeders, Unscramblers and Accumulators



Leading edge corner wrap module for applying one label around case front corner



Trailing edge corner wrap module for applying one label around case rear corner



Dual Panel tamp module for applying two labels on adjacent sides of a container/pallet

Hoppmann Corporation continually strives to improve its products. Therefore, Hoppmann reserves the right to change or discontinue specifications and designs shown in this brochure without notice and without incurring obligation. 06/05

Hoppmann supplies equipment worldwide.
For additional information contact:

Hoppmann Labeling Equipment... The *solution* starts *here.*

Corporate Headquarters

13129 Airpark Drive, Suite 120
Elkwood, Virginia 22718
PH: 540-829-2564 • FAX: 540-829-1724

Manufacturing

291 Dillard Rd., P.O. Box 879
Madison Heights, VA 24572
PH: 434-929-4746 • FAX: 434-929-4959

email: labelers@hoppmann.com • www.hoppmann.com

L5000PA Label Applicator